



FIREWORK CHAMPIONS

Event guidance for attendees 2024 **HATFIELD HOUSE**

Event date: 10/08/2024

Gates open: 4:00pm

Gates close: 8:00pm

Fireworks: 9:20pm

Vehicle Entrance - Google Link:

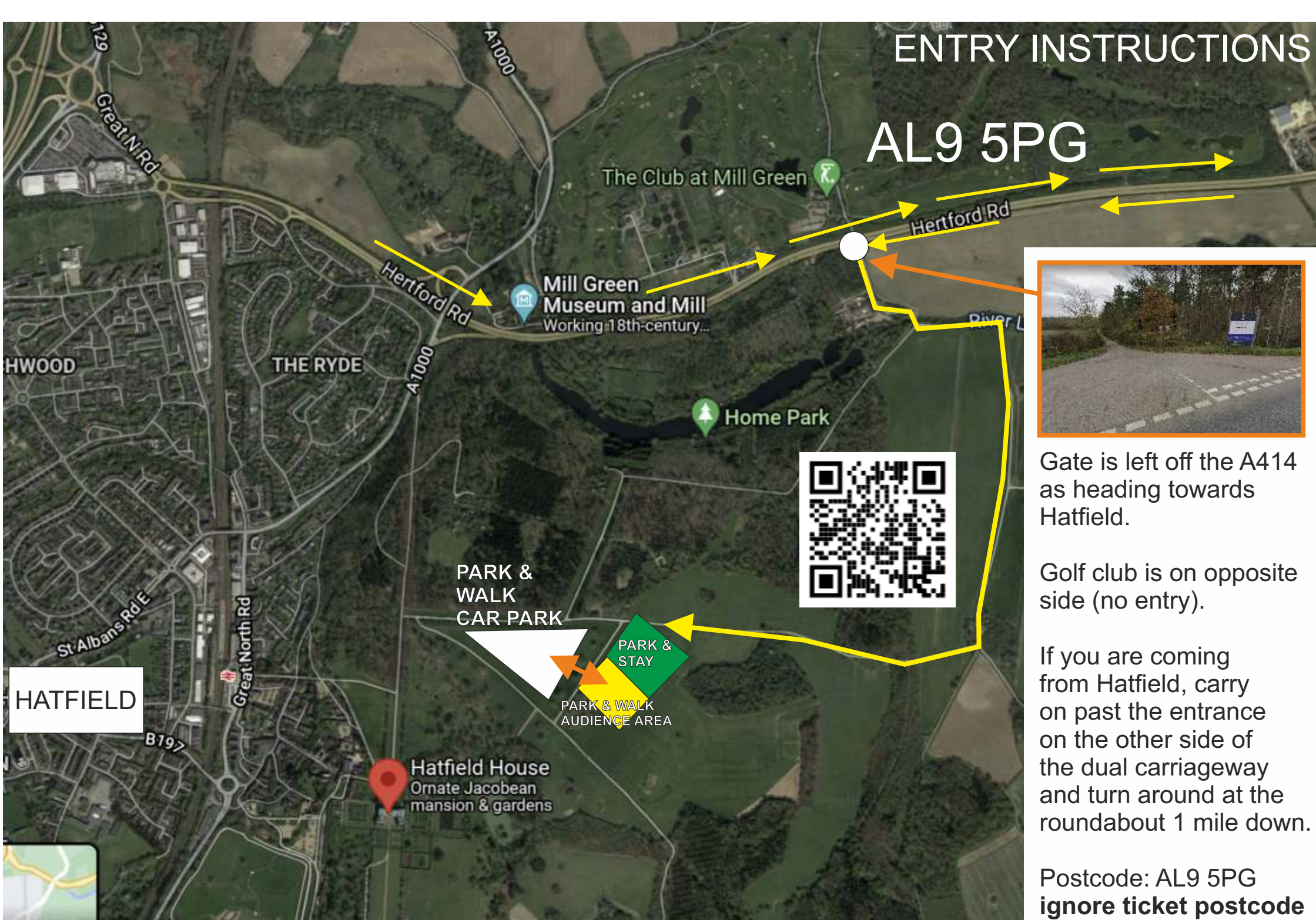
<https://goo.gl/maps/rEhz7RZN3UHBptxD8>



Please read carefully before leaving home
We are expecting rain so please drive carefully

ENTRY INSTRUCTIONS

AL9 5PG



Gate is left off the A414 as heading towards Hatfield.

Golf club is on opposite side (no entry).

If you are coming from Hatfield, carry on past the entrance on the other side of the dual carriageway and turn around at the roundabout 1 mile down.

Postcode: AL9 5PG
ignore ticket postcode

B

A414

ENTRY / EXIT

EXIT ONLY

LIGHTING

PARK & WALK
PARKING

PARK &
STAY

TOILETS

WALK IN

GAZEBOS

FOOD / TOILETS

FIREWORKS

DRONES

ENTRY / EXIT
ON FOOT ONLY

A

Hatfield House





ENTRY GATE



HATFIELD TOWN
THIS WAY INFRONT

GOLF CLUB
ENTRANCE
(NO ENTRY)

The events entrance at Hatfield is off the A414 as heading TOWARDS Hatfield Town from Essendon. If you miss the turning please turn around and head back towards Essendon roundabout then turn round again. If you are coming from Hatfield town you will need to drive past the entrance turn around at Essendon roundabout and head up towards the entrance on your left (as pictured)

AL9 5PG

PARK & STAY (WAS DRIVE-IN)

*Read if you purchased a £40
PREMIUM PARKING ticket. Otherwise please
read the fourth page onwards.*



PARK & STAY permit holders

For our **PARK & STAY** guests please follow instructions to the next available marked out bay. Please switch off your car including the lights and make yourself comfortable in your bay. You can leave this bay to visit the facilities like toilets and concessions.

If you wish to park next to your family please arrive in convoy as you will be parked up in order as you arrive. If you have a high vehicle please park on the back row.

Please print your tickets where possible as they scan quicker. It is also helpful if you can supply them all the same way up for ease of finding the barcodes.

After the 4th and final firework display you may leave but we ask you not to start your engines until it's your turn to leave. We will leave by columns/rows to try and stop everyone rushing to the exit at the same time, so please follow instructions given out by our steward. Please be patient and respect the stewards. No Gazebos allowed in this area.

Walking from your car to the toilets/food: We have allowed a walkway between the front of your car and the boot of the next.

PARK & WALK

*Read if you only have entry tickets
Adults or Children, Gazebos.
(The previous way of doing things)*



Park and walk tickets (how it's always been)

For all 'walk in' guests you will be directed to a general car park area to park up and walk to the audience area. If you are disabled please tell a steward and they will direct you to the disabled car park. Please remember to have your tickets ready when you walk from your car as these will be checked before you enter the arena (on foot).

ARRIVING ON FOOT?

Please head to the entrance opposite the train station. Walk through over the bridge and across the grass field as directed. Lighting is in areas but please bring a torch for when exiting.

When the event has finished please leave the arena and then turn left along the (unused) roadway - DO NOT walk through the car park as there will be lots of moving vehicles.

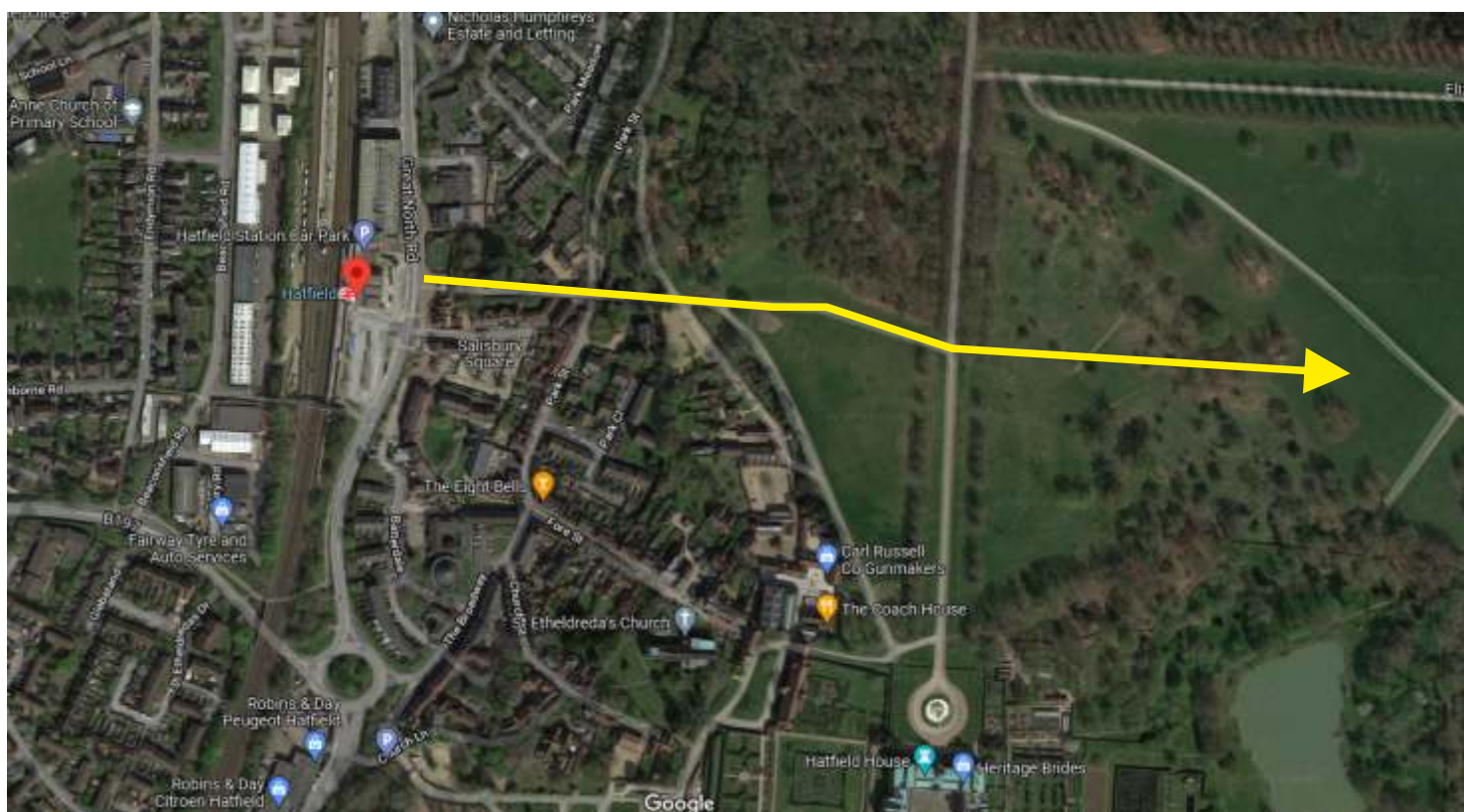
GAZEBO PERMITS

Please tell the stewards you have a gazebo permit on arrival and you'll be instructed where to setup.

Arriving on foot



Please head to the entrance opposite Hatfield train station. Your tickets will be scanned when inside.



GENERAL INSTRUCTIONS

*Please read very carefully
and plan your visit to the event
and whilst at the event*



LITTER

Please drop any litter in the bins on site in the audience field, or take it home with you.

Our litter picking team will have to collect rubbish you leave so please ensure you don't leave any. Bring a waste bag – pop it in and take it back home with you. You'll be doing us a massive favour and it will put a smile on the litter picking team who work so hard to clean up after each event. Please respect the venue by keeping it clean.

TEXT VOTING

After the 3rd display you can vote for your favourite by texting the following (cost is 1 standard text charge from your mobile):

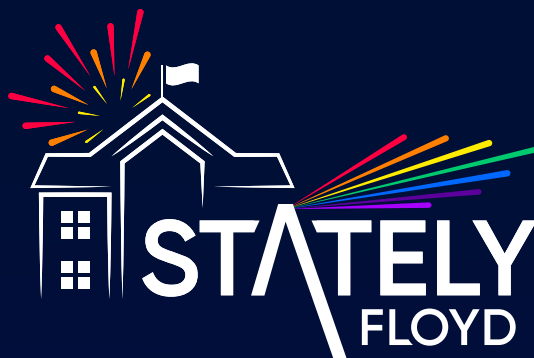
SHOW 1	}	Remember the space after show
SHOW 2		
SHOW 3		

To: 88802

**PLEASE TAKE HOME YOUR RUBBISH
PLEASE BRING A BIN BAG**

**Please bring a torch
Ground can be uneven so walk with care**

"Phenomenal night, will definitely be back next year! The music was superb, the drones were spectacular and the fireworks just topped off a wonderful night!"



MILE
PRESENTS

"Brilliantly organised event. Well delivered show. Great facilities and loads of space. One of the best outdoor gigs we have been to in years"

UK PINK FLOYD EXPERIENCE TRIBUTE

PINK FLOYD

"This was an outstanding event I was overwhelmed in the last song and actually cried! We have already booked our B&B for next year!"

FLOYD

LASERS

FIREWORKS

DRONE SHOW

MUSIC

FULLY LICENSED

BAR & FOOD

"Outstanding event, the best concert I have ever been to. Two great acts lovely setting. Great music, lighting, and then fireworks. Thank you"

"Absolutely amazing, best gig I've been to in 30+ years of seeing bands. Drone show was incredible, lasers amazing, band members fantastically accomplished."

"What a ending to a great day. UK Pink Floyd with that light show, lasers and drones was amazing. Looking out for next years tickets"

**TICKETS ON
SALE SOON
NEW FOR
2025**

STANFORD HALL

16th MAY 2025

HATFIELD HOUSE

12th SEP 2025

BOOK NOW BY VISITING:

www.statelyfloyd.co.uk

01327 876 037

